



Bon Preu Supplier EDI guide

Message = DESADV
D96A CROSSDOCKING

Versioned

| Version | Date | Concept |
|---------|----------|-----------|
| 1.3 | 07032024 | Version 3 |

SUMARIO

| | |
|---|----------|
| 1. OBJECTIVES OF THE USER GUIDE..... | 2 |
| 1.1. Advantages of using EDI Standard | 2 |
| 1.2. First steps in the communication. Operational with Bonpreu | 2 |
| 1.3. Messages, Versions and Mailboxes | 3 |
| 2. MESSAGE GUIDES..... | 4 |
| 2.1. Guide of the Despatch Advice message (DESADV D96A) | 4 |
| 2.1.1. Introduction | 4 |
| 2.1.2. Message implementation | 4 |
| 2.2. Branching Diagram..... | 6 |
| 2.3. Details of the segments used..... | 7 |
| 2.3.1. Despatch Advise example (DESADV D96A – Crossdocking)..... | 21 |

1. OBJECTIVES OF THE USER GUIDE

The primary objective of this EDI User Guide, designed for the electronic exchange of business documents with Bonpreu, is to provide clarity on all aspects involved in each phase required for efficient exchanges.

It is crucial that, through this guide, you identify all the relevant areas within our organization involved in various operational processes. Additionally, it is important to clearly identify the areas within your organization that are involved, ensuring that the communication flow is as effective as possible.

If you are using the EDI system standard for the first time, it's important to note that this guide contains technical details related to communication and EDI messages. Therefore, the IT departments of your organizations must have essential access to it.

In the following chapters, you will find information related to the initial steps required to establish the EDI connection between your organization and ours. You will also find details about the different documents we will begin transmitting and their contents.

1.1. Advantages of using EDI Standard

Currently, the supply chain between manufacturers and dealers requires efficient goods flow to prevent stockouts on shelves and expedite invoice payments.

To achieve this, a tool is needed for the exchange of business documents to avoid delays. The standard Electronic Data Interchange (EDI) system effectively reduces the supply chain cycle and associated costs.

As general advantages and specifics of the EDI standard at Bonpreu, we can mention:

- Utilizing a common language that is valid for all partners with existing message standards.
- Reduced incidents in administrative processes due to the non-manipulation of data.
- Lower transmission costs compared to loading data into information systems, allowing for a quick compensation and amortization of the software investment.

In summary, we can state that it provides a competitive advantage for any company, whether a manufacturer, distributor, or logistics operator.

1.2. First steps in the communication. Operational with Bonpreu

Those providers that it is the first time you go to use the System of Electronic Data Interchange it is necessary to know the parties involved in this system and the first steps to enter in this area.

- Manufacturers, distributors, dealers, stores, and logistics operators are users of this electronic data interchange system.
- Software vendors, who provide and implement programs to be able to make exchanges and to translate the different messages.
- Value-added networks (data transmission) are implemented to organize their infrastructure, facilitating communication among different users, and enabling potential interchange between various networks and locations.

For more information, if you need to, you can reach out to the EDI services supplier, SERES (902424342) or in his web (<http://es.groupseres.com>).

1.3. Messages, Versions and Mailboxes

Messages that Bonpreu interchange will be:

- DESADV D96A (CROSSDOCKING)

The Bonpreu mailboxes are:

- **Bonpreu production** COUNTRY=FR ADM=ATLAS PRMD=SERES O=ALLEGRO-ES
OU1=EDI SURNAME=EDISERV GIVENNAME=8422410000005
 - **Bonpreu Test** COUNTRY=FR ADM=ATLAS PRMD=SERES O=ALLEGRO-ES OU1=EDI
SURNAME=EDISERV GIVENNAME=8422410000005
-
- **Who Order (Buyer):** Bonpreu EAN Code
 - **Who receives the goods (Receiver):** EAN Store/Dealer Code
 - **Who is billed:** Bonpreu EAN Code (8422410000005)
 - **Who pays (the Payer):** Bonpreu EAN Code

2. MESSAGE GUIDES

2.1. Guide of the Despatch Advice message (DESADV D96A)

2.1.1. Introduction

The Despatch Advice is a message specifying details for the goods despatched under conditions agreed between the buyer and the seller, with the function of advising the consignee of the detailed contents of a consignment. Will be used its D96A version.

The message allows the consignee to know what materials were despatched and when, allowing the consignee to prepare for receipt of the goods and to cross-check the delivery with the order.

Below are the data used, description of them, and the location in the EDI message.

2.1.2. Message implementation.

For be able to successfully manage the messages DESADV with Despatch Advice to platforms, it is necessary that the message sender to include additional logistics information. The additional information necessary for the crossdocking logistics delivery notes will be the following:

- RFF + ON Order Number of BONPREU

It is mandatory to specify to what consolidated order refers to this dispatch advice.

- CPS+2+1'
- PAC+1++201'

It is mandatory to indicate in the PAC segment if the merchandise will be served on a full pallet, on a half or a quarter pallet.

- PCI+33E
- GIN+BJ+SSCC packaging of higher level (usually PALLET)

After the segments PAC and CPS includes the number plate of the container (SSCC).

Each package with (SSCC) **should only contain merchandise of a shop** (an order of BONPREU)

- In the LIN segment indicates the EAN code of the article requested:
 - If the EAN is from the consumption unit, you can add the PIA segment with ADU qualifier to indicate the EAN-code of the shipping unit.
 - If the EAN is from the shipping unit, you can add the PIA segment with ACU qualifier to indicate the EAN code of the consumption unit.
- RFF+ON Store Order Number of Bonpreu

It is mandatory to specify to what order referencing this line

- LOC GLN Store of Bonpreu.

It is necessary to specify to what GLN Store referencing this line, if it is specified in the order.

- QTY+12 (delivered quantity) indicating the unit of measure (PCE/LTR), if applicable.

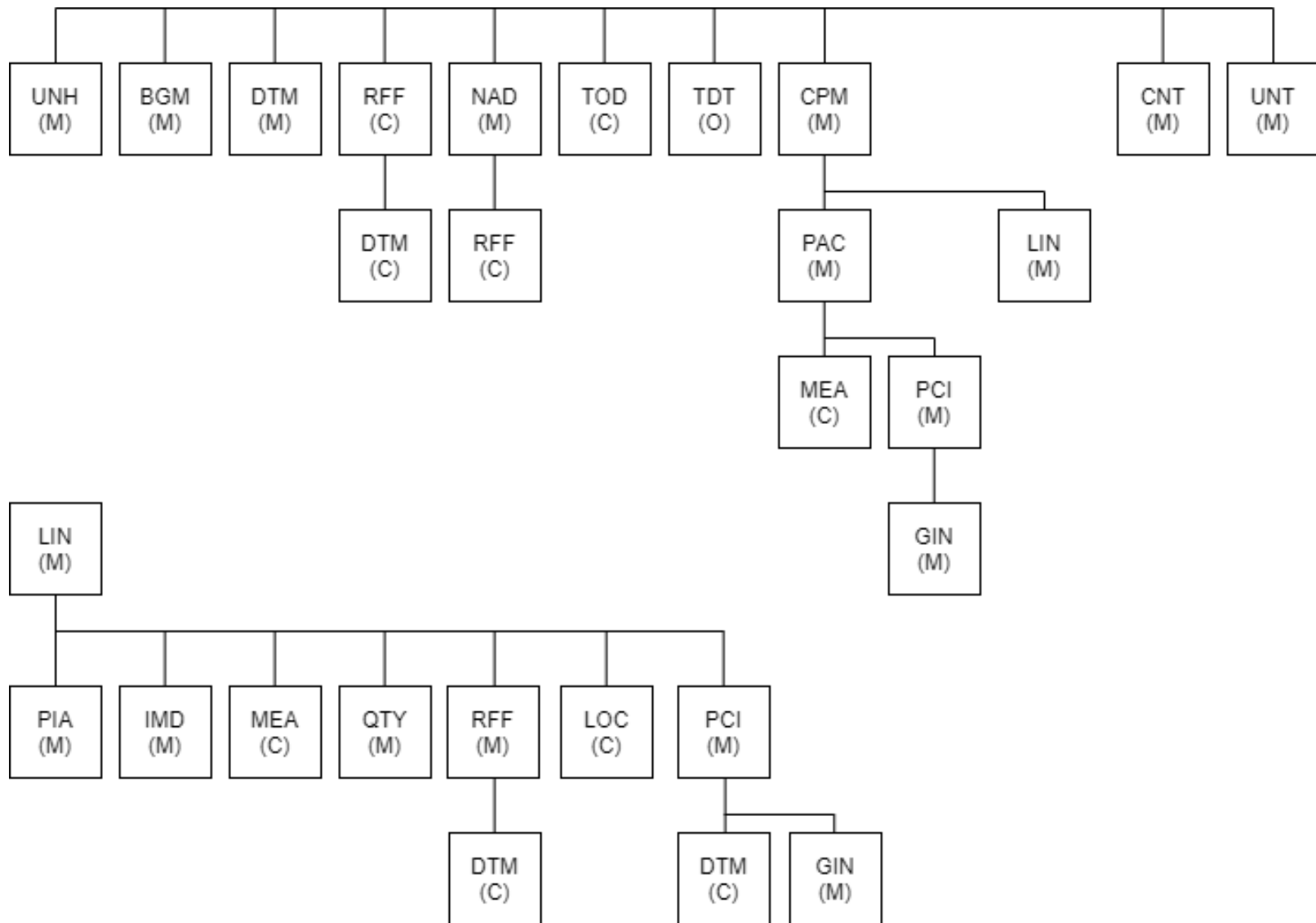
You need to indicate UNITS or TOTAL PIECES per SSCC

- QTY+59 (Number of consumer units in the traded unit).

Other considerations to keep in mind:

- **Allow multiple items, batch numbers and expiration dates for each SSCC**
If the article has a lot number and expiration date, it is mandatory to specify this information. For the batch number, it can be reported either in the PIA segment or the GIN segment. As for the expiration date, it can be reported in the DTM segment of the line or the DTM segment of the GIN.
- For delivery notes with goods of variable weight, it is mandatory to report the net weight of the shipment at the pallet level. If reporting at the pallet level is not possible, you must provide the weight at the item level (item detail).
- The EAN code for the item reported on the delivery note must match the one sent in the original order to Bonpreu.
- When receiving the DESADV message, it is necessary to use the GLN as the supplier identifier. DESADV messages using CIFs or other identifiers in the NAD segments will not be accepted.

2.2. Branching Diagram



2.3. Details of the segments used

| UNH | | MANDATORY FIELD | | |
|----------|--|-----------------|-----|---|
| Item No. | Description EANCOM | Tipo | M/C | Value to report |
| 0062 | Message reference number | AN..14 | M | Sender's unique message reference. Sequence number of messages in the interchange |
| 0065 | Message type identifier | AN..3 | M | DESADV = Delivery note |
| 0052 | Message type version number | AN..3 | M | D |
| 0054 | Sub-version number of the message type | AN..3 | M | 96A = Directory EDIFACT D.96A |
| 0051 | Controlling agency | AN..3 | M | UN= Agency responsible for the type of message. |
| 0057 | Code assigned by the association | AN..3 | M | EAN005 = EAN Version control number. |

Example: **UNH+00000472240374+DESADV:D:96A:UN:EAN005'**

| BGM | | MANDATORY FIELD | | |
|----------|---------------------------------|-----------------|-----|---------------------------------------|
| Item No. | Description EANCOM | Tipo | M/C | Value to report |
| 1001 | Name of the document or message | AN..3 | M | YA5= Despatch Advice in Cross docking |
| 1004 | Name of the document or message | AN..35 | M | Delivery note number |
| 1225 | Message function, encoded | AN..3 | M | 9 = Original |

Example: **BGM+YA5+9999999+9'**

| DTM | | MANDATORY FIELD | | |
|----------|---------------------------------------|-----------------|-----|-----------------------|
| Item No. | Description EANCOM | Tipo | M/C | Value to report |
| 2005 | Date / time / period qualifier | AN..3 | M | 137 = Document date |
| 2380 | Date / time / period | AN..8 | M | Document date |
| 2379 | Date / time / period format qualifier | AN..3 | M | 102 = Format CCAAMMDD |

Example: **DTM+137:20180410:102'**

| DTM | | MANDATORY FIELD | | |
|----------|---------------------------------------|-----------------|-----|---|
| Item No. | Description EANCOM | Tipo | M/C | Value to report |
| 2005 | Date / time / period qualifier | AN..3 | M | 191 = Estimated delivery date of the merchandise. |
| 2380 | Date / time / period | AN..8 | M | Estimated delivery date of the merchandise. |
| 2379 | Date / time / period format qualifier | AN..3 | M | 102 = Format CCAAMMDD |

Example: **DTM+191:20180410:102'**

| DTM | | OPTIONAL FIELD | | |
|----------|---------------------------------------|----------------|-----|------------------------------|
| Item No. | Description EANCOM | Tipo | M/C | Value to report |
| 2005 | Date / time / period qualifier | AN..3 | M | 2 = Requested delivery date. |
| 2380 | Date / time / period | AN..8 | M | Requested delivery date. |
| 2379 | Date / time / period format qualifier | AN..3 | M | 102 = Format CCAAMMDD |

Example: **DTM+2:20180410:102'**

| RFF | | MANDATORY FIELD | | |
|----------|---------------------|-----------------|-----|---------------------------|
| Item No. | Description EANCOM | Tipo | M/C | Value to report |
| 1153 | Reference qualifier | AN..3 | M | DQ = Delivery note number |
| 1154 | Reference number | AN..35 | M | Delivery note number |

Example: **RFF+DQ:9999999'**

| DTM | | MANDATORY FIELD | | |
|----------|---------------------------------------|-----------------|-----|--------------------------|
| Item No. | Description EANCOM | Tipo | M/C | Value to report |
| 2005 | Date / time / period qualifier | AN..3 | M | 171 = Delivery note date |
| 2380 | Date / time / period | AN..8 | M | Delivery note date |
| 2379 | Date / time / period format qualifier | AN..3 | M | 102= Format CCAAMMDD |

Example: **DTM+171:20180410:102'**

| RFF | | | | |
|-----------------|---------------------|--------|-----|-----------------------------------|
| MANDATORY FIELD | | | | |
| Item No. | Description EANCOM | Tipo | M/C | Value to report |
| 1153 | Reference qualifier | AN..3 | M | ON = Buyer Order Number |
| 1154 | Reference number | AN..35 | M | Buyer's Consolidated Order Number |

Example: **RFF+ON:W080-466666'**

| DTM | | | | |
|-------------------|---------------------------------------|-------|-----|-------------------------|
| CONDITIONAL FIELD | | | | |
| Item No. | Description EANCOM | Tipo | M/C | Value to report |
| 2005 | Date / time / period qualifier | AN..3 | M | 171 = Order Date / Time |
| 2380 | Date / time / period | AN..8 | M | Buyer order date |
| 2379 | Date / time / period format qualifier | AN..3 | M | 102= Format CCAAMMDD |

Example: **DTM+171:20180408:102'**

| NAD | | | | |
|-----------------|---|--------|-----|---|
| MANDATORY FIELD | | | | |
| Item No. | Description EANCOM | Tipo | M/C | Value to report |
| 3035 | Part qualifier | AN..3 | M | MS = Sender of the document or message (Origin) |
| 3039 | Part identification, encoded | AN..35 | M | Sender of the document or message |
| 3055 | Agency responsible for code list, coded | AN..3 | M | 9 = EAN (International Article Numbering Association) |

Example: **NAD+MS+841050000035::9'**

| NAD | | | | |
|-----------------|---|--------|-----|--|
| MANDATORY FIELD | | | | |
| Item No. | Description EANCOM | Tipo | M/C | Value to report |
| 3035 | Part qualifier | AN..3 | M | MR= Receiver of the message (Destination) |
| 3039 | Part identification, encoded | AN..35 | M | Receiver of the message |
| 3055 | Agency responsible for code list, coded | AN..3 | M | 9= EAN (International Article Numbering Association) |

Example: **NAD+MR+842241000005::9'**

| NAD | | | | |
|-----------------|---|--------|-----|--|
| MANDATORY FIELD | | | | |
| Item No. | Description EANCOM | Tipo | M/C | Value to report |
| 3035 | Part qualifier | AN..3 | M | SU= Provider |
| 3039 | Part identification, encoded | AN..35 | M | Provider |
| 3055 | Agency responsible for code list, coded | AN..3 | M | 9= EAN (International Article Numbering Association) |

Example: **NAD+SU+841050000035::9'**

| NAD | | | | |
|-----------------|---|--------|-----|--|
| MANDATORY FIELD | | | | |
| Item No. | Description EANCOM | Tipo | M/C | Value to report |
| 3035 | Part qualifier | AN..3 | M | BY= Buyer |
| 3039 | Part identification, encoded | AN..35 | M | Buyer |
| 3055 | Agency responsible for code list, coded | AN..3 | M | 9= EAN (International Article Numbering Association) |

Example: **NAD+BY+842241000005::9'**

| RFF | | | | |
|-------------------|---------------------|--------|-----|---|
| CONDITIONAL FIELD | | | | |
| Item No. | Description EANCOM | Tipo | M/C | Value to report |
| 1153 | Reference qualifier | AN..3 | M | API = Additional Buyer Identification |
| 1154 | Reference number | AN..35 | M | Code of the department that requests the merchandise. |

Example: **RFF+API:COBY'**

| NAD | | | | |
|-----------------|---|--------|-----|---|
| MANDATORY FIELD | | | | |
| Item No. | Description EANCOM | Tipo | M/C | Value to report |
| 3035 | Part qualifier | AN..3 | M | DP = Receiving part of the merchandise (RECEIVER) |
| 3039 | Part identification, encoded | AN..35 | M | Receiving part of the merchandise |
| 3055 | Agency responsible for code list, encoded | AN..3 | M | 9 = EAN (International Article Numbering Association) |

Example: **NAD+DP+8422410101054::9'**

| RFF | | | | |
|-------------------|---------------------|--------|-----|---|
| CONDITIONAL FIELD | | | | |
| Item No. | Description EANCOM | Tipo | M/C | Value to report |
| 1153 | Reference qualifier | AN..3 | M | API = Additional receiver identification |
| 1154 | Reference number | AN..35 | M | Code of the dock that receives the merchandise. |

Example: **RFF+API:CODDP'**

| TOD | | | | |
|----------------|---|--------|-----|--|
| OPTIONAL FIELD | | | | |
| Item No. | Description EANCOM | Tipo | M/C | Value to report |
| 4055 | Function of the delivery conditions | AN..3 | M | 2 = Shipping terms |
| 4215 | Transportation cost payment method, encoded | AN..3 | C | DF = Buyer and supplier defined method PC = Advance payment but charged to the client |
| 4053 | Delivery terms, encoded | AN..3 | C | 01E= Contact the receiving party before delivery (EAN code) 02E= Ship merchandise, express delivery (EAN code) 03E= Special delivery conditions (EAN code) 04E= Cash on delivery (EAN code) |
| 4052 | Delivery conditions | AN..35 | M | |

Example: **TOD+2+PC+01E:::CONDITIONS**

| TDT | | | | |
|----------------|--|--------|-----|---|
| OPTIONAL FIELD | | | | |
| Item No. | Description EANCOM | Tipo | M/C | Value to report |
| 8051 | Transport stage qualifier | AN..3 | M | 20 = Main transport |
| 8067 | Transport modes, encoded | AN..3 | M | 10 = Marine transport 20 = Railway transport 30 = Road transport 60 = Multimodal transport |
| 3127 | Carrier identification | AN..35 | M | Transport plate number (Trailer plate number) |
| 3128 | Carrier Name | AN..35 | C | Carrier Name |
| 8212 | Identification of the means of transport | AN..35 | M | Transport plate number (Cabine plate number) |

Example: **TDT+20++30++TRAILER:::CARRIER NAME+++:::CAB PLATE NBR'**

| CPS | | | | |
|-----------------|-------------------------------------|--------|-----|--------------------------------------|
| MANDATORY FIELD | | | | |
| Item No. | Description EANCOM | Tipo | M/C | Value to report |
| 7164 | Hierarchy identification number | AN..12 | M | |
| 7166 | Hierarchical predecessor identifier | AN..12 | C | Conditional only on the root package |

Example: **CPS+2+1'**

| PAC | | | | |
|-----------------|--|--------|-----|--|
| MANDATORY FIELD | | | | |
| Item No. | Description EANCOM | Tipo | M/C | Value to report |
| 7224 | Number of packages | AN..8 | M | |
| 7233 | Information associated with the packaging, encoded | AN..3 | C | Packaging barcode type. 50 = EAN code EAN-13 51 = EAN code ITF-14 o IFT-6 52 = EAN code UCC o EAN-128 |
| 7065 | Packaging type, encoded | AN..17 | M | 200 = Pallet iso (80 x 60 cm) 201 = Pallet iso 1 (80 x 120 cm) 203 = Pallet iso 2 (40 x 60 cm) |
| 3055 | Agency responsible for code list, encoded | AN..3 | M | 9 = EAN (International Article Numbering association) |
| 7064 | Packaging type | AN..35 | C | EAN13 or DUN14 code of the packaging. |

Example: **PAC+1++201::9'**

| MEA | | | | |
|-------------------|-----------------------------------|--------|-----|--------------------------|
| CONDITIONAL FIELD | | | | |
| Item No. | Description EANCOM | Tipo | M/C | Value to report |
| 6311 | Measurement application qualifier | AN..3 | M | PD = Physical dimensions |
| 6313 | Measurement dimension, encoded | AN..3 | M | AAC = Total Net Weight |
| 6321 | Meaning of the measure, encoded | AN..3 | M | 4 = Equal to |
| 6411 | Unit of measure specifier | AN..3 | M | |
| 6314 | Measure value | AN..18 | M | Total Net Weight |

NOTA: Mandatory if it is a variable weight item for sale.

Example: **MEA+PD+AAC:4+KGM:320'**

| MEA | | | | |
|-------------------|-----------------------------------|--------|-----|--------------------------|
| CONDITIONAL FIELD | | | | |
| Item No. | Description EANCOM | Tipo | M/C | Value to report |
| 6311 | Measurement application qualifier | AN..3 | M | PD = Physical dimensions |
| 6313 | Measurement dimension, encoded | AN..3 | M | AAD = Total Gross Weight |
| 6321 | Meaning of the measure, encoded | AN..3 | M | 4 = Equal to |
| 6411 | Unit of measure specifier | AN..3 | M | |
| 6314 | Measure value | AN..18 | M | Total Gross Weight |

Example: **MEA+PD+AAD:4+KGM:330.48'**

| PCI | | | | |
|-----------------|-------------------------------|-------|-----|--|
| MANDATORY FIELD | | | | |
| Item No. | Description EANCOM | Tipo | M/C | Value to report |
| 4233 | Marking instructions, encoded | AN..3 | M | 33E= Marked with serial shipping unit code |

Example: **PCI+33E'**

| GIN | | | | |
|-----------------|---------------------------|--------|-----|---|
| MANDATORY FIELD | | | | |
| Item No. | Description EANCOM | Tipo | M/C | Value to report |
| 7405 | Identity number qualifier | AN..3 | M | BJ= Serial Shipping Container Code (SSCC) |
| 7402 | Identity number | AN..18 | M | SSCC number |

Example: **GIN+BJ+38426489XXXX44455'**

| LIN | | | | |
|-----------------|--------------------|--------|-----|---|
| MANDATORY FIELD | | | | |
| Item No. | Description EANCOM | Tipo | M/C | Value to report |
| 1082 | Item line number | AN..6 | M | Item line number in the Despatch Advice message generated by the application. |
| 7140 | Item number | AN..35 | M | Item code |
| 7143 | Item number type | AN..3 | M | EN = International Article Numbering Association (EAN) UP = UPC (Universal Product Code) |

Example: **LIN+1++8410500001438:EN'**

| PIA | | OPTIONAL FIELD | | |
|----------|---------------------------------|----------------|-----|-------------------------------|
| Item No. | Description EANCOM | Tipo | M/C | Value to report |
| 4347 | Product code function qualifier | AN..3 | M | 1 = Additional identification |
| 7140 | Item number | AN..35 | M | Item code |
| 7143 | Item number type | AN..3 | M | PV=EAN Expedition unit |

Example: **PIA+1+1234:PV'**

| PIA | | OPTIONAL FIELD | | |
|----------|---------------------------------|----------------|-----|-------------------------------|
| Item No. | Description EANCOM | Tipo | M/C | Value to report |
| 4347 | Product code function qualifier | AN..3 | M | 1 = Additional identification |
| 7140 | Item number | AN..35 | M | Item code |
| 7143 | Item number type | AN..3 | M | SA= Supplier item number |

Example: **PIA+1+1234:SA'**

| PIA | | OPTIONAL FIELD | | |
|----------|---------------------------------|----------------|-----|-------------------------------|
| Item No. | Description EANCOM | Tipo | M/C | Value to report |
| 4347 | Product code function qualifier | AN..3 | M | 1 = Additional identification |
| 7140 | Item number | AN..35 | M | Item code |
| 7143 | Item number type | AN..3 | M | IN= Buyer Item number. |

Example: **PIA+1+1234:IN'**

| PIA | | OPTIONAL FIELD | | |
|----------|---------------------------------|----------------|-----|--------------------------|
| Item No. | Description EANCOM | Tipo | M/C | Value to report |
| 4347 | Product code function qualifier | AN..3 | M | 1 = Additional identify. |
| 7140 | Item number | AN..15 | M | Batch number |
| 7143 | Item number type | AN..3 | M | NB= Batch number. |

Example: **PIA+1+L1234:NB'**

Note: In the event that the item has a batch number, it is mandatory to report it either in the PIA segment or in the GIN

| PIA | | OPTIONAL FIELD | | |
|----------|---------------------------------|----------------|-----|-------------------------------|
| Item No. | Description EANCOM | Tipo | M/C | Value to report |
| 4347 | Product code function qualifier | AN..3 | M | 1 = Additional identification |
| 7140 | Item number | AN..35 | M | Item code |
| 7143 | Item number type | AN..3 | M | ADU= EAN-14 Item code |

Example: **PIA+1+7613035198586:ADU::9'**

| PIA | | OPTIONAL FIELD | | |
|----------|---------------------------------|----------------|-----|-------------------------------|
| Item No. | Description EANCOM | Tipo | M/C | Value to report |
| 4347 | Product code function qualifier | AN..3 | M | 1 = Additional identification |
| 7140 | Item number | AN..35 | M | Item code |
| 7143 | Item number type | AN..3 | M | ACU= EAN-13 Item content code |

Example: **PIA+1+12345678901234:ACU'**

| IMD | | MANDATORY FIELD | | |
|----------|--------------------------------|-----------------|-----|-----------------|
| Item No. | Description EANCOM | Tipo | M/C | Value to report |
| 7077 | Item description type, encoded | AN..3 | M | F = Free format |
| 7008 | Item description | AN..35 | M | |

Example: **IMD+F+++::FREE TEXT'**

| IMD | | MANDATORY FIELD | | |
|----------|--------------------------------|-----------------|-----|-----------------------|
| Item No. | Description EANCOM | Tipo | M/C | Value to report |
| 7077 | Item description type, encoded | AN..3 | M | E = Short free format |
| 7008 | Item description | AN..35 | M | |

Example: **IMD+E+++:: FREE TEXT''**

| IMD | | OPTIONAL FIELD | | |
|----------|---|----------------|-----|---|
| Item No. | Description EANCOM | Tipo | M/C | Value to report |
| 7077 | Item description type, encoded | AN..3 | M | C = Code (from the list of industrial codes) |
| 7009 | Item description, encoded | AN..17 | M | DU = Expedition Unit CU = Consumption Unit |
| 3055 | Agency responsible for code list, encoded | AN..3 | M | 9 = EAN (International Article Numbering association) |

Example: **IMD+C++DU::9'**

| MEA | | CONDITIONAL FIELD | | |
|----------|-----------------------------------|-------------------|-----|-----------------------------|
| Item No. | Description EANCOM | Tipo | M/C | Value to report |
| 6311 | Measurement application qualifier | AN..3 | M | AAI = Item weight |
| 6313 | Measurement dimension, encoded | AN..3 | M | AAF = Total Net Weight Line |
| 6321 | Meaning of the measure, encoded | AN..3 | C | 4 = Equal to |
| 6411 | Unit of measure specifier | AN..3 | M | KGM |
| 6314 | Measure value | AN..18 | M | Total Net Weight |

Note: Mandatory if it is a variable weight item for sale and does not appear at the Pallet level.

Example: **MEA+AAI+AAF:4+KGM:320'**

| QTY | | MANDATORY FIELD | | |
|----------|---------------------------|-----------------|-----|----------------------------------|
| Item No. | Description EANCOM | Tipo | M/C | Value to report |
| 6063 | Quantity qualifier | AN..3 | M | 12 = Shipped quantity |
| 6060 | Quantity | AN..17 | M | Shipped quantity |
| 6411 | Unit of measure specifier | AN..3 | M | LTR= Liter PCE= unit or piece |

Example: **QTY+12:528:PCE'**

| QTY | | MANDATORY FIELD | | |
|----------|---------------------------|-----------------|-----|--|
| Item No. | Description EANCOM | Tipo | M/C | Value to report |
| 6063 | Quantity qualifier | AN..3 | M | 59 = Consumption units per shipping unit |
| 6060 | Quantity | AN..17 | M | Consumption units per shipping unit |
| 6411 | Unit of measure specifier | AN..3 | M | LTR= Litter PCE= unit or piece |

Example: **QTY+59:6:PCE'**

| DTM | | CONDITIONAL FIELD. See section 6.1.2 | | |
|----------|---------------------------------------|--------------------------------------|-----|----------------------|
| Item No. | Description EANCOM | Tipo | M/C | Value to report |
| 2005 | Date / time / period qualifier | AN..3 | M | 36 = Expiration date |
| 2380 | Date / time / period | AN..8 | M | Expiration date |
| 2379 | Date / time / period format qualifier | AN..3 | M | 102= Format CCAAMMDD |

Example: **DTM+36:20181231:102'**

Note: may appear at Group 15 level or at Group 20 level. In the event that the article has an expiration date, it is mandatory to inform it either in group 15 or in group 20

| RFF | | OPTIONAL FIELD | | |
|----------|---------------------|----------------|-----|---------------------------|
| Item No. | Description EANCOM | Tipo | M/C | Value to report |
| 1153 | Reference qualifier | AN..3 | M | DQ = Delivery note number |
| 1154 | Reference number | AN..35 | M | Delivery note number |

Example: **RFF+DQ:PEDPRO'**

| LOC | | MANDATORY FIELD | | |
|----------|---|-----------------|-----|------------------------------------|
| Item No. | Description EANCOM | Tipo | M/C | Value to report |
| 3246 | Reference qualifier | AN..3 | M | ON = BONPREU order request number. |
| 3225 | Reference number | AN..35 | M | Buyer Order Number |
| 3055 | Agency responsible for code list, encoded | AN..3 | M | GS1 (International EAN) |

Example: **LOC+7+8422410110025::9'**

Note: Mandatory if it appear in the buyer cross-docking order.

| PCI | | | | |
|-----------------|--------------------------------|-------|-----|----------------------------|
| MANDATORY FIELD | | | | |
| Item No. | Description EANCOM | Tipo | M/C | Value to report |
| 4233 | Marking instructions, encoded. | AN..3 | M | 36E= Provider Instructions |

Example: **PCI+36E'**

| DTM | | | | |
|--------------------------------------|---------------------------------------|-------|-----|----------------------|
| CONDITIONAL FIELD. See section 6.1.2 | | | | |
| Item No. | Description EANCOM | Tipo | M/C | Value to report |
| 2005 | Date / time / period qualifier | AN..3 | M | 36 = Expiration date |
| 2380 | Date / time / period | AN..8 | M | Expiration date |
| 2379 | Date / time / period format qualifier | AN..3 | M | 102= Format CCAAMMDD |

Example: DTM+36:20101110:102'

Note: it may appear at Group 15 level or at Group 20 level. In the event that the article has an expiration date, it is mandatory to inform it either in group 15 or in group 20

| DTM | | | | |
|--------------------------------------|---------------------------------------|-------|-----|----------------------|
| CONDITIONAL FIELD. See section 6.1.2 | | | | |
| Item No. | Description EANCOM | Tipo | M/C | Value to report |
| 2005 | Date / time / period qualifier | AN..3 | M | 365 = Packaging date |
| 2380 | Date / time / period | AN..8 | M | Packaging date |
| 2379 | Date / time / period format qualifier | AN..3 | M | 102= Format CCAAMMDD |

Example: **DTM+365:20100514:102'**

| DTM | | | | |
|--------------------------------------|---------------------------------------|-------|-----|---|
| CONDITIONAL FIELD. See section 6.1.2 | | | | |
| Item No. | Description EANCOM | Tipo | M/C | Value to report |
| 2005 | Date / time / period qualifier | AN..3 | M | 361 = Preferred consumption date |
| 2380 | Date / time / period | AN..8 | M | Preferred consumption date or Expiration date |
| 2379 | Date / time / period format qualifier | AN..3 | M | 102= Format CCAAMMDD |

Example: **DTM+361:20100514:102'**

| GIN | | | | |
|--------------------------------------|---------------------------|--------|-----|-------------------|
| CONDITIONAL FIELD. See section 6.1.2 | | | | |
| Item No. | Description EANCOM | Tipo | M/C | Value to report |
| 7405 | Identity number qualifier | AN..3 | M | BX = Batch Number |
| 7402 | Identity number | AN..35 | M | Batch Number |

Example: **GIN+BX+80950XXXX'**

Note: In the event that the item has a batch number, it is mandatory to report it either in the PIA segment or in the GIN

| CNT | | | | |
|-----------------|--------------------|--------|-----|-------------------------------|
| MANDATORY FIELD | | | | |
| Item No. | Description EANCOM | Tipo | M/C | Value to report |
| 6069 | Control qualifier | AN..3 | M | 2 = LIN number in the message |
| 6066 | Control value | AN..17 | M | LIN number in the message |

Example: **CNT+2:2'**

| UNT | | | | |
|-----------------|--------------------------|--------|-----|--------------------------|
| MANDATORY FIELD | | | | |
| Item No. | Description EANCOM | Tipo | M/C | Value to report |
| 0074 | Message segments number | AN..6 | M | Message segments number |
| 0062 | Message reference number | AN..14 | M | Message reference number |

Example: **UNT+46+EW78444269'**

2.3.1. Clarifications for variable weight goods

DESADV messages, it is necessary, for both variable weight and fixed weight merchandise, that suppliers always report EAN13 codes.

If the item is **NOT** variable weight (fixed weight):

The EAN13 code will be reported in the LIN segment and the quantities sent will refer to consumption units.

```
CPS+1' <--- "Dummy" CPS segment
PAC+xx++201' <--- PALLET FORMAT
PCI+33E'
GIN+BJ+184XXXXXXXXXXXXZZZZ2' <--- SSCC PALLET LABEL
LIN+11++84XXXXXXXXXXXXB:EN' <--- EAN13
PIA+1+584XXXXXXXXXXXXA:ADU' <--- DUN14 (optional)
QTY+12:25' <--- QUANTITY SENT IN consumer units (Units per pallet)
QTY+59:5' <--- Quantity of consumption units in each dispatch unit
LOC+7+8422410110025:9' <--- Store GLN (reported in the Order)
PCI+36E'
DTM+36:20101215:102' <--- Expire date
GIN+BX+L3185E20' <--- Batch number
```

If the item is of variable weight:

The DUN14 code will be reported in the LIN segment and the shipped quantities will refer to consumption units.

```
CPS+1' <--- "Dummy" CPS segment
PAC+xx++201' <--- PALLET FORMAT
PCI+33E'
GIN+BJ+184XXXXXXXXXXXXZZZZ2' <--- SSCC PALLET LABEL
LIN+11++84XXXXXXXXXXXXB:EN' <--- EAN13
PIA+1+584XXXXXXXXXXXXA:ACU' <--- DUN14
MEA+AAI+AAF+KGM:199,783' <--- Net weight
QTY+12:12' <--- QUANTITY SENT IN consumer units (Units per pallet)
QTY+59:1' <--- Quantity of consumption units in each dispatch
unit
LOC+7+8422410110025:9' <--- Store GLN (reported in the Order)
PCI+36E'
DTM+36:20101215:102' <--- Expire date
GIN+BX+L3185E20' <--- Batch number
```

2.3.1. Despatch Advise example (DESADV D96A – Crossdocking)

UNH+1+DESADV:D:96A:UN:EAN005'
BGM+YA5+B040-7777777+9'
DTM+137:202103120910:203'
DTM+191:202103120000:203'
RFF+ON:B040-7777777'
RFF+DQ:B040-7777777'
NAD+MS+8430471460003::9'
NAD+SU+8410500000035::9'
NAD+MR+8422410000005::9'
NAD+DP+8422410150007::9'
NAD+BY+8422410000005::9'
CPS+1'
PAC+73++201'
CPS+2+1'
PAC+1++201'
PCI+33E'
GIN+BJ+384105001790857343'
LIN+1++5410500016784:EN'
PIA+1+15410500016781:ADU'
IMD+C++CU::9'
IMD+F++:::ITEM1'
QTY+12:6'
QTY+59:1'
LOC+7+8422410110025::9'
PCI+36E'
DTM+36:20210410:102'
GIN+BX+210410'
LIN+2++5410500016791:EN'
PIA+1+15410500016798:ADU'
IMD+C++CU::9'
IMD+F++:::ITEM2'
QTY+12:6'
QTY+59:1'
LOC+7+8422410110025::9'
PCI+36E'
DTM+36:20210416:102'
GIN+BX+210416'
CPS+3+1'
PAC+1++201'
PCI+33E'
GIN+BJ+384105001790857374'
LIN+3++5410500016791:EN'
PIA+1+15410500016798:ADU'
IMD+C++CU::9'
IMD+F++:::ITEM2'
QTY+12:3'
QTY+59:1'
LOC+7+8422410110049::9'
PCI+36E'
DTM+36:20210416:102'
GIN+BX+210416'
LIN+4++5410500016814:EN'
PIA+1+15410500016811:ADU'
IMD+C++CU::9'
IMD+F++:::ITEM3'

QTY+12:3'
QTY+59:1'
LOC+7+8422410110049::9'
PCI+36E'
DTM+36:20210409:102'
GIN+BX+210409'
LIN+5++5410500016883:EN'
PIA+1+15410500016880:ADU'
IMD+C++CU::9'
IMD+F++:::ITEM4'
QTY+12:6'
QTY+59:1'
LOC+7+8422410110049::9'
PCI+36E'
DTM+36:20210409:102'
GIN+BX+210409'
CPS+4+1'
PAC+1++201'
PCI+33E'
GIN+BJ+384105001790857404'
LIN+6++5410500016791:EN'
PIA+1+15410500016798:ADU'
IMD+C++CU::9'
IMD+F++:::ITEM1'
QTY+12:9'
QTY+59:1'
LOC+7+8422410110698::9'
PCI+36E'
DTM+36:20210416:102'
GIN+BX+210416'
LIN+7++5410500016807:EN'
PIA+1+15410500016804:ADU'
IMD+C++CU::9'
IMD+F++:::ITEM4'
QTY+12:2'
QTY+59:1'
LOC+7+8422410110698::9'
PCI+36E'
DTM+36:20210408:102'
GIN+BX+210408'
CNT+2:7'
UNT+105+1'